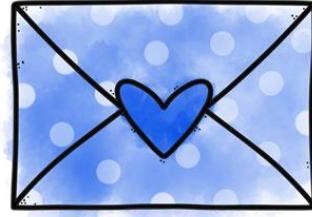


चलो पढ़े शब्द

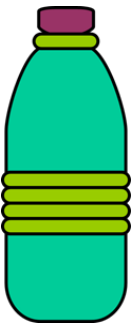
स्तर 1



कमल



खत



जल



घर

कमल



खत

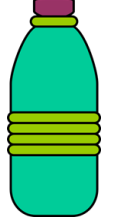


घर



चलो पढ़े शब्द।

जल



स्तर 1

नाम: _____

कमल



खत

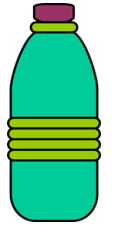


घर



चलो पढ़े शब्द।

जल

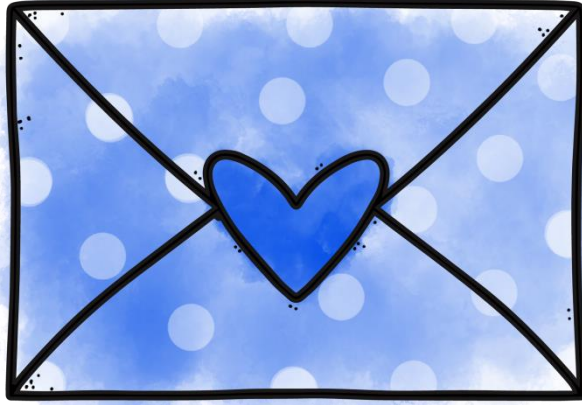


स्तर 1

नाम: _____



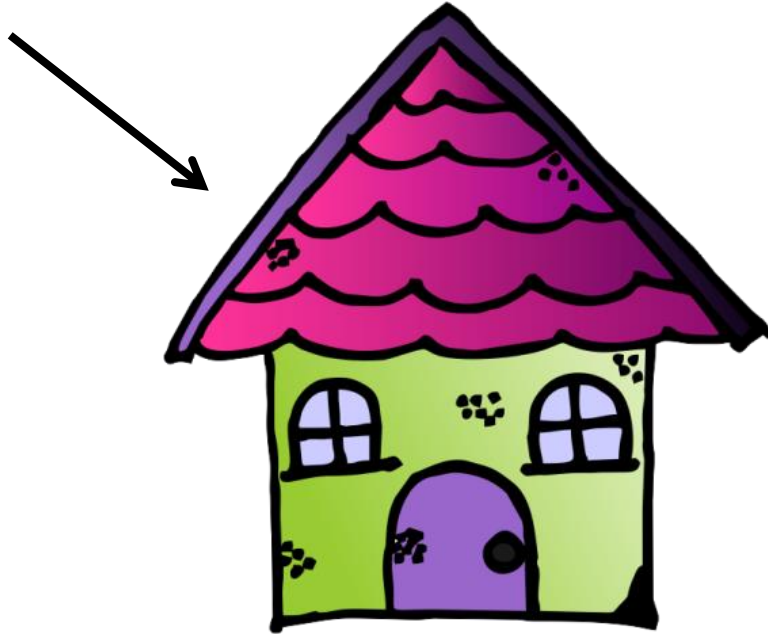
कमल



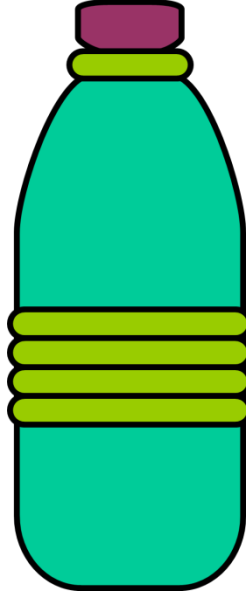
खत



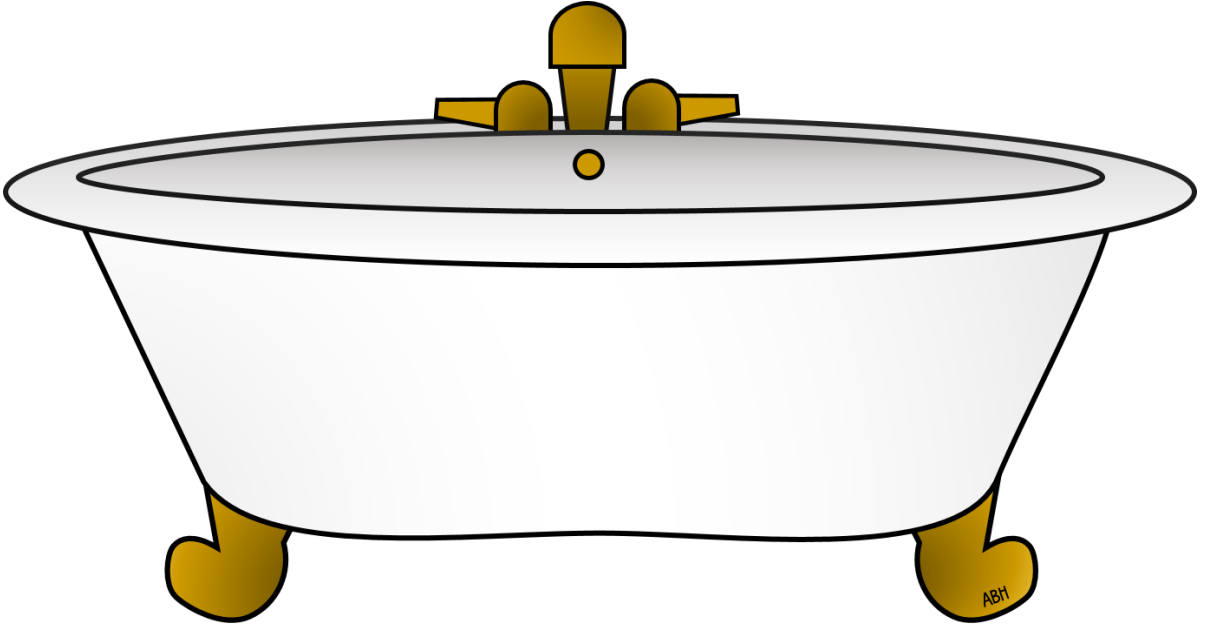
घर



छत



जल



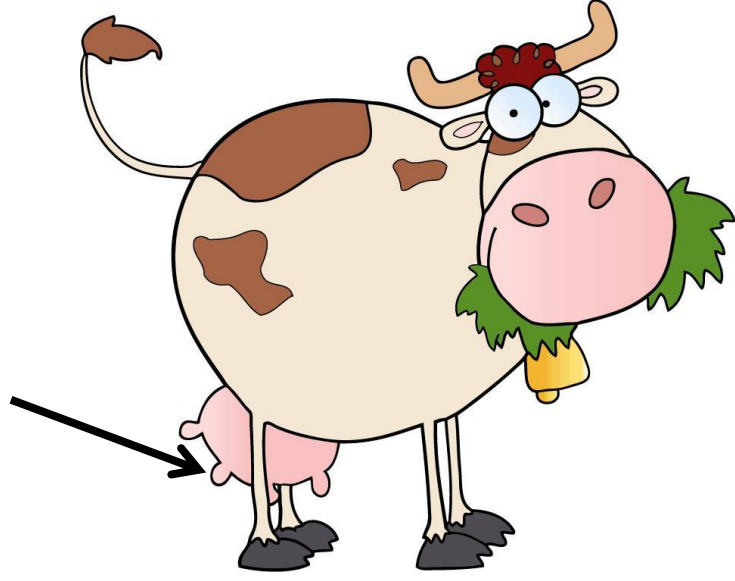
टब



वन



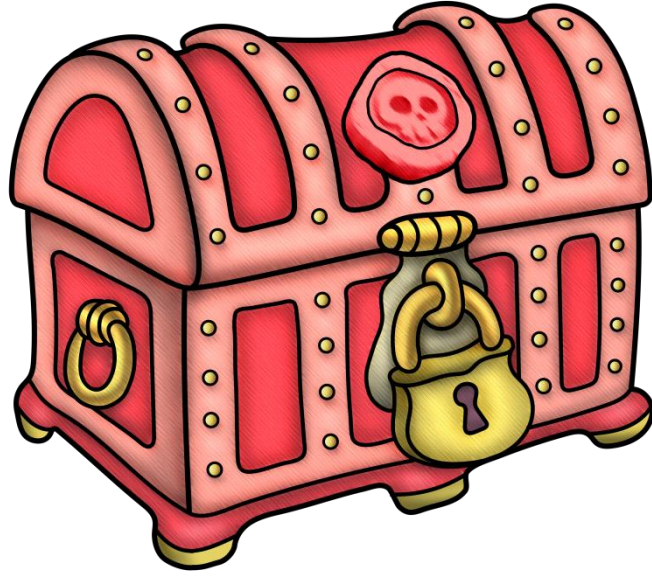
रस



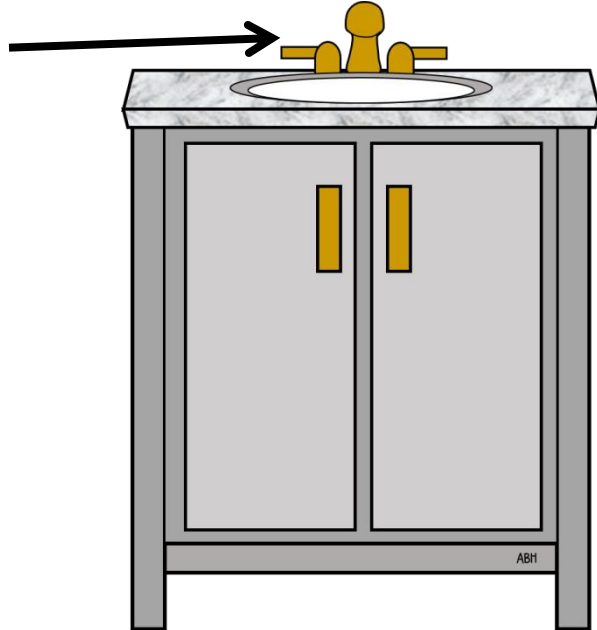
थन

१०

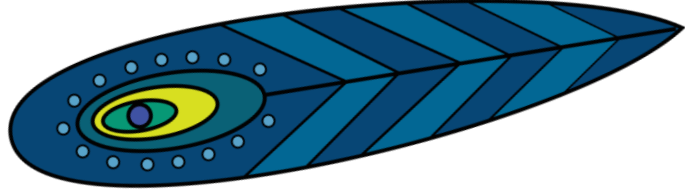
दस



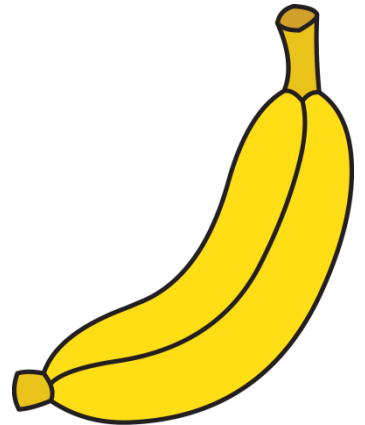
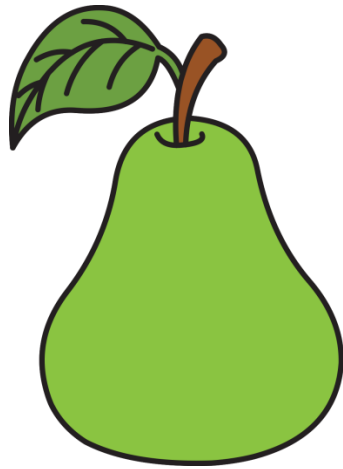
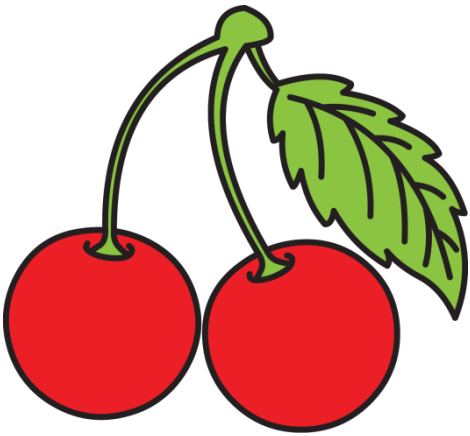
धन



नल



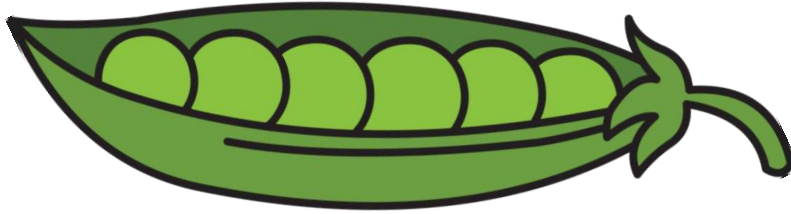
पर



फल



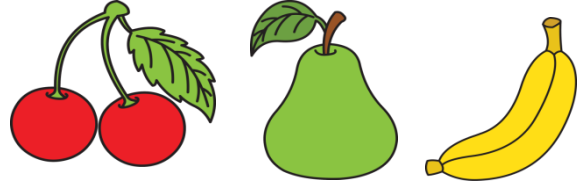
बस



मटर

शब्द पढ़ो और सही चित्र के साथ मिलाओ ।

बस



फल



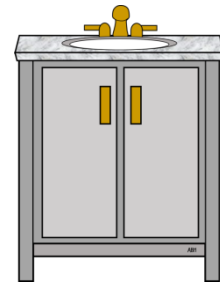
नल



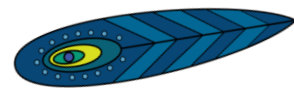
पर



मटर



धन



शब्द पढ़ो और सही चित्र के साथ मिलाओ ।

रस

दस

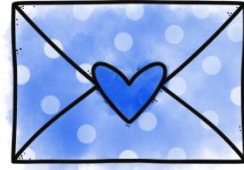
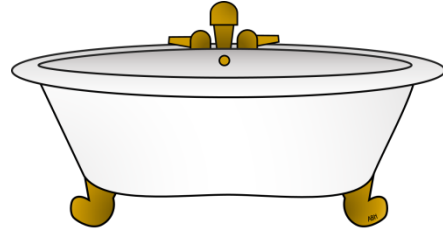
टब

खत

कमल

वन

१०



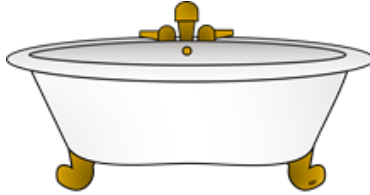
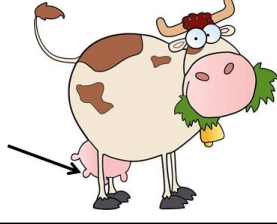
चित्र देखकर, शब्द लिखिए।



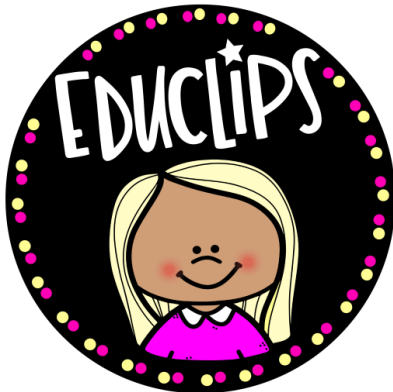
चित्र देखकर, शब्द लिखिए।



चित्र देखकर, शब्द लिखिए।



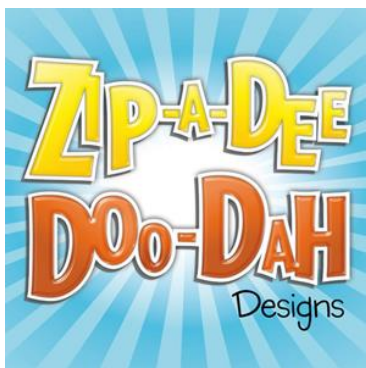
Clipart Credits:



AlliePaigeArts

www.etsy.com/shop/BootiqueIllustration

Quirky Teacher Designs



THANK YOU!

Thank you so much for purchasing this product. If you have any questions, please feel free to email me at

neha@totknots.in

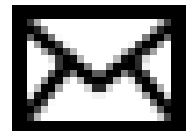
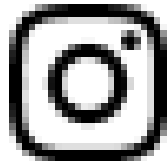
You may

- Use this product for personal/student use in a single classroom and for non-commercial purposes.
- Refer your friends back to the website, if they are interested in downloading this product.

You May Not

- Give this product to your friends or colleagues
- Copy this item for use by others.
- Post this product on a website, blog, website/server or anywhere online at any time, under any circumstance for free download.

Follow us on social media



Before you leave...

Check out our SEL Program
Social Slate
By Neha Chopra

Social Slate is a SEL program for young learners. This program lays a strong foundation to build social and emotional skills in children. Social Slate aims at helping children to understand and express emotions, resolve social conflicts and develop self-awareness.

The program consists of 12 units and each unit focuses on developing a specific social and emotional skill. The 12 units are as follows:

- Identifying and expressing feelings
- Self-Control
- Handling disappointment
- Kindness

- 
- Paying attention
 - Developing good habits
 - Grace and Courtesy
 - Making good choices
 - Learning from mistakes
 - Honesty
 - Accepting differences
 - Think before you speak

Our adorable penguin Skipper will help children to understand, learn and acquire new SEL skills.

The units are in no particular order and can be taught according to the need of the learner.

Ideally one unit should be taught for two weeks to strengthen the skill.

Check out the Social Slate page on our website to know more:

<https://www.totknotsedu.com/social-and-emotional-learning>

To get the products for the program, click here:

<https://www.totknotsedu.com/shop?Collection=Social+and+Emotional+Learning>